



## National Institute of Minority Health Disparities SBIR/STTR Health Disparities Program

CDR Michael Banyas, USPHS, MPA, MA NIMHD  
SBIR/STTR Program Manager  
Community and Scientific Programs



National Institute  
on Minority Health  
and Health Disparities

# **NIMHD Program Goals**

**We are diseases agnostic**

**Focus not drugs, but devices, services, digital health,  
and other means to close health equity gaps and causes**

- 1) Promote research to understand and to improve the health of racial/ethnic minority populations
- 2) Advance scientific understanding of the causes of health disparities
- 3) Develop and test interventions to reduce health disparities
- 4) Create and improve scientific methods, metrics, measures, and tools that support health disparities research

# NIMHD SBIR/STTR Research Considerations

Buckets Identified as Barriers for Health Equity ( i.e, access) at the individual, family, community, and population level

**Physical**

**Knowledge**

**Infrastructure**

**Economic**

**Cultural**



National Institute  
on Minority Health  
and Health Disparities



# NIH Health Disparity Terms and Recognized Populations

## Health Disparity Definition

A health disparity is a health difference that adversely affects disadvantaged populations in comparison to a reference population, based on one or more health outcomes. All populations with health disparities are socially disadvantaged due in part to being subject to racist or discriminatory acts and are underserved in health care.

Health Disparities Recognized Populations
Hispanics/ Latinos
Rural areas
American Indians/ Alaska Natives
Sexual/gender minorities
Socio economically disadvantaged individuals
African Americans/ Blacks
Native Hawaiians and Other Pacific Islanders
Asian
People Experiencing Disabilities <b>NEW Sept (2023)</b>

# Examples of NIMHD SBIR/STTR Funded Applications

Concept	Health Disparity Population
<u>Rapid Point of Care Test for APOL1 Renal Risk Alleles</u>	African American
<u>Improving Latino Health Literacy: An Intergenerational Approach</u>	Latino
<u>Building a Digital Respiratory Disease Framework for COPD Management in Central Appalachia</u>	Rural
<u>Trans Women Connected: A Mobile App-Delivered Sexual Health Promotion Program</u>	LGBTQIA+
<u>A Tool to Improve Evaluation of Patient Navigation Services in Underserved Populations</u>	Tribal
<u>Continuing Care App for Probationers and Parolees with Substance Use Disorders</u>	Lower Socioeconomic Status/People with lower incomes



# How to Frame Your Abstract

## Equation

**Health Disparity Population + Health Inequity Problem + Intervention and Difference From Competitors = Health Equity**

### Example 1:

**Latinos + Experience High Hypertension + Educational and Delivery of Culturally Competent and Affordable Preventive Care Through Mobile Clinical Care Units = Health Equity**

### Example 2:

**Company X will utilize a health disparities populations community and societal influences for use of machine learning dietary tools for creating guidance for diabetes control, therefore increasing equitable health access to control diabetes in a culturally competent method at an individual level.**

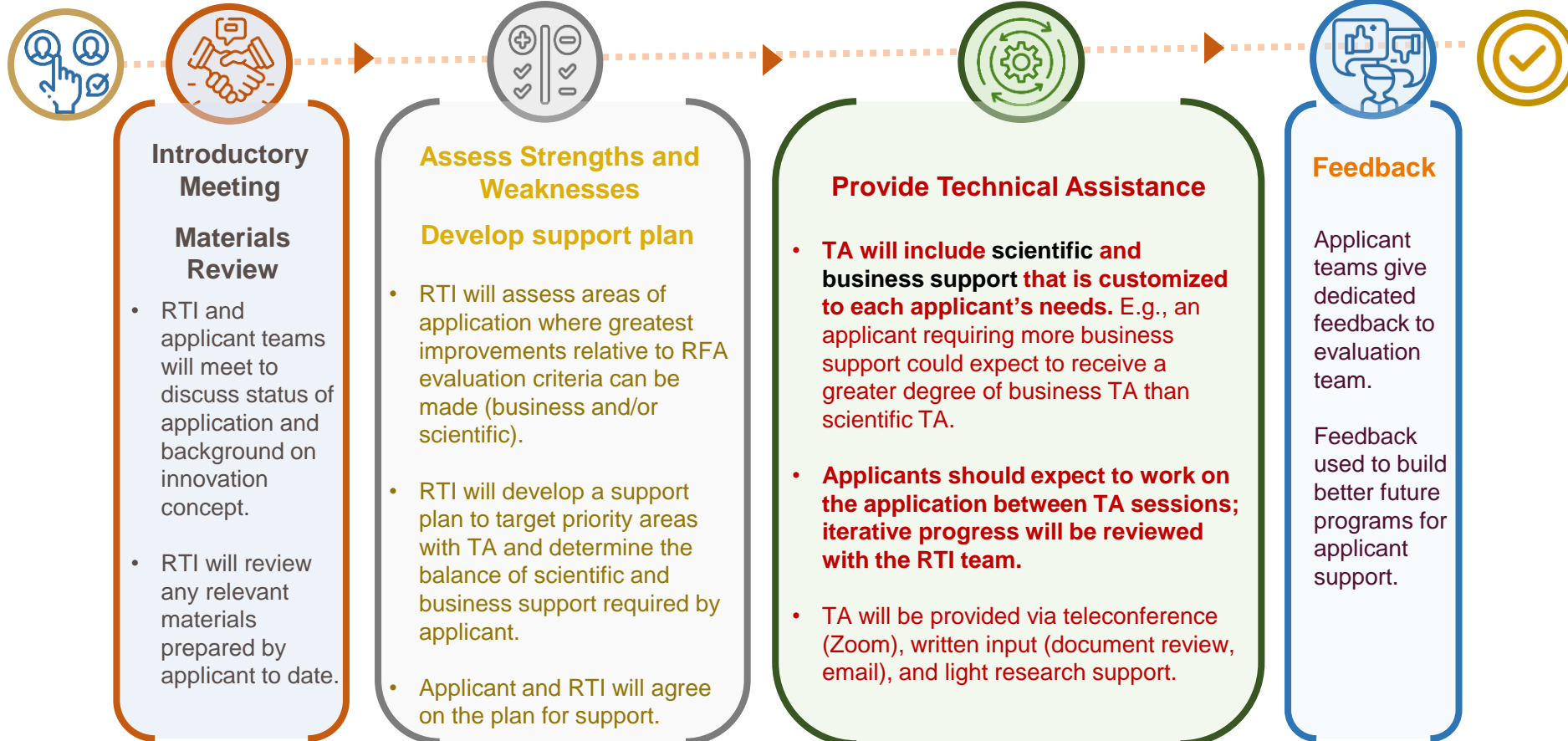


# HDPreApp Program Opening February 2024

Selection  
into program

Engagement time period may vary by applicant need and RFA deadline

Application  
Submission



**Scientific/technical support may include:** assessment of targeted impact of work and fit relative to RFA evaluation criteria, research plan review, identification of opportunities to strengthen research design and edits for clarity and persuasiveness.

**Business/market advisory support may include:** support for applicants to improve value proposition/competitive landscaping, define commercialization or go-to-market strategy, defining customer segments, describing business model; light market research support.



# Funding Opportunities 2024

- Innovations for Healthy Living: Focusing on digital health, services, decentralized clinical trials, and digital therapeutics
- Tribal Health
- Telehealth



National Institute  
on Minority Health  
and Health Disparities





# Questions?

## Contact

**CDR Michael Banyas**

[nimhdsbirsttr@mail.nih.gov](mailto:nimhdsbirsttr@mail.nih.gov)

## Related

[NIH SEED: SBIR/STTR Programs and Application](#)

## *SBIR Success Story*

[Digital Learning Company Supports Parents, Teachers and Underserved Communities](#)

## Learn More

[NIMHD Research Framework](#)

[NIMHD Fact Sheet \(PDF, 90 KB\)](#)

Read about what is happening at NIMHD at the [News and Events](#) section

## Connect with Us

[Subscribe to email updates](#)

[LinkedIn](#)

[Twitter](#)

[Facebook](#)